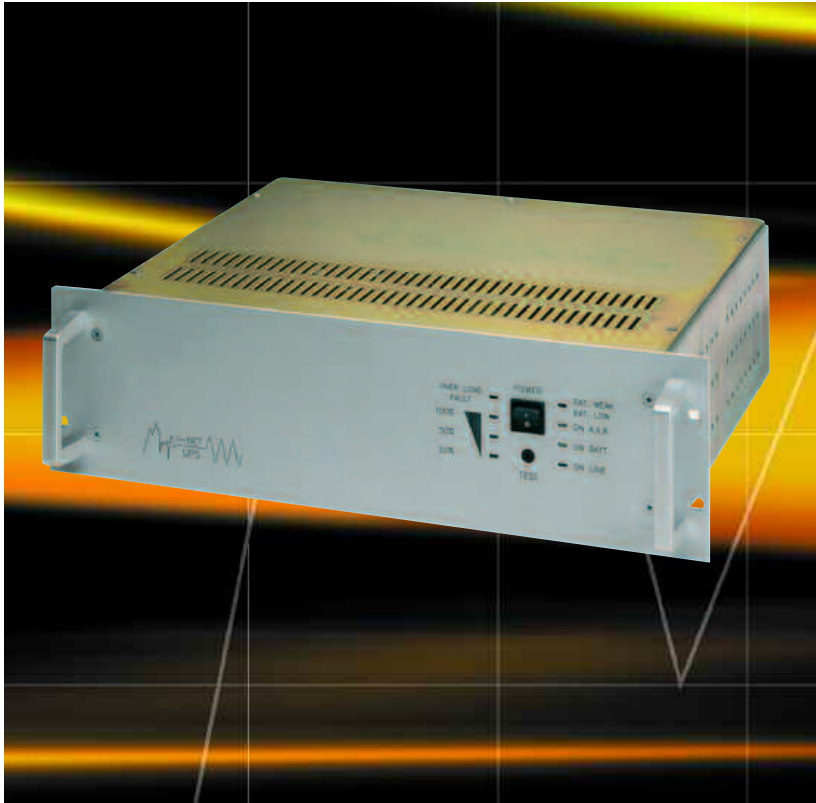




## 235 • UPS range MT RM 19"



The MT is an advanced networked UPS which protects sensitive components from power failures, spikes and other electrical faults. This device is ideally suited for computers,

telecommunication equipment and other computer assisted systems. The compact and stable construction offers additional safeguarding and flexibility in application areas.

### UPS range MT RM 19" Line interactive

- 700, 1000, 1500, 2000, 3200 VA
- UPS classification VI-SS-211 in accordance with IEC 62040-3
- line interactive technology
- microprocessor control
- sine wave output
- temperature sensor
- automatic frequency detection
- RS-232, detector contacts and SNMP via Adapter
- management software for Windows '95, '98, 2000, 2003 Server, NT, XP, Novell, Unix
- 36 months guarantee

**Finish:**  
aluminium

**Material:**  
enclosure: sheet metal  
front: aluminium

**Delivery:**

- operating instruction
- software
- mains cable 2,5 mm
- data cable (RS = 232) 2,5 mm

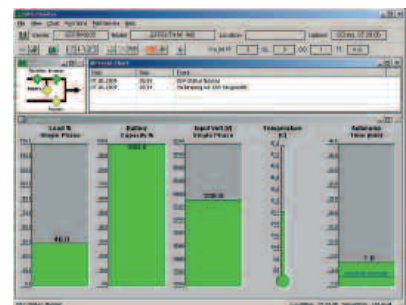
### UPS management

The RS232 interface on the MT along with the accompanying UPS management software allows for a whole range of communication options from shutdown to UPS diagnostics.

**PowershutPlus** runs as a client/server application for heterogeneous networks or local computers. It runs under Windows 95/98/2000/2003 Server/NT, Novell, Linux and all popular Unix derivatives. Furthermore it contains an SNMP agent under Windows NT and Novell.

All servers in the current network may be shutdown (multiserver-shutdown) via optional RCCMD clients.

The software displays all important UPS information such as temperature, battery and power supply condition and more in clear graphical form. Any faults occurring can easily be relayed via e-mail, mobile or fax.





## Order information

Type	MT 700 RM	MT 1000 RM	MT 1500 RM	MT 2000 RM	MT 3200 RM
<b>Output</b>					
Power rating VA/Watt	700/400	1000/670	1500/950	2000/1200	3200/2000
Current at 230 V in Ampere	2,6	4,3	6	7,8	13,9
Connections	2x Earthed power socket	2x Earthed power socket	2x Earthed power socket	2x Earthed power socket	2x Earthed power socket
Output voltage	230 V $\pm$ 2,6 %				
Frequency	50/60 Hz $\pm$ 0,1 % autom.				
Voltage type	Sine				
<b>Input</b>					
Voltage	171-278 VA C (230 VA C)				
Frequency	50 Hz (47,5-52,5) / 60 Hz (57-63) automatic				
Boost (+13%)	Yes				
Buck (-13%)	Yes				
<b>Batteries</b>					
Autonomy time at nom. load	8 min	10 min	10 min	10 min	8 min
DC voltage	24 VDC	36 VDC	48 VDC	60 VDC	96 VDC
Assembly	7 Ah-12V				
Type	sealed maintenance-free lead AGM batteries				
Loading time	8-10 hours at 90 %				
Test	automatic or manual via key				
Avail. power efficiency AC-AC	>95 %				
Battery start	Yes				
Auto-restart	Yes				
Overload	110% for 10 seconds				
Noise level	< 40dA(A) at distance of 1m (load and temperature dependent)				
<b>Displays</b>					
LED (UPS status)	Line, On Bat, On A VR, Bat Weak, Fault, Overload, Load-Level				
Acoustic alarm	Yes				
<b>Protection</b>					
Surge	Yes				
Lightning protection	ANSI/IEEE587 Cat A				
EMC/LVD	EN50091-2, EN50091-1				
Tests	TÜV, GS, CE				
Communication	RS232 /Optocoupler / SNMP via adapter				
<b>Area</b>					
Temperature	0-40°C (UPS without batteries)				
Air humidity	0-95 % (non-condensing)				
<b>Mechanical</b>					
Dimensions (U x D in mm)	3 U x 300	3 U x 300	3 U x 300	3 U x 360	3 U x 600
Weight	14 kg	15 kg	23 kg	30 kg	42,7 kg
Order number	23-5300-01	23-5300-02	23-5300-03	23-5300-04	23-5300-05



## 235 • UPS range MT RM 19"



MH RM  
Models 700/1000/1500 VA  
(batteries integrated in device)

MH RM  
Models 700/1000/1500 VA  
(batteries in external battery housing)

### UPS range MT RM 19" online continuous transducer

- 700, 1000, 1500, 2000, 3200 VA
- UPS classification VFI-SS-111 in accordance with IEC 62040-3
- online continuous transducer
- microprocessor control
- sine wave output
- automatic frequency detection
- intelligent battery management
- RS-232, detector contacts and SNMP via Adapter
- management software for Windows '95, '98, 2000, 2003 Server, NT, XP, Novell, Unix
- temperature sensor
- low noise development
- 36 months guarantee

**Finish:**  
aluminium

**Material:**  
enclosure: sheet metal  
front: aluminium

**Delivery:**

- operating instructions
- software
- mains cable 2.5mm
- data cable (RS = 232) 2,5 mm

The MH is a modern microprocessor controlled online continuous transducer with electronic bypass for highly sensitive and critical applications such as servers, workstations, monitoring equip-

ment or industrial equipment

The compact and stable construction offers additional safeguarding and flexibility in application areas.

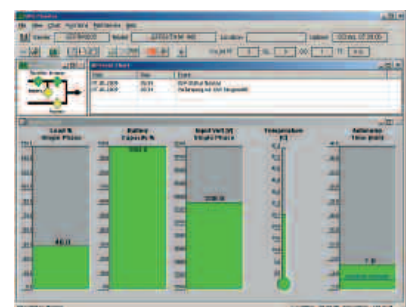
### UPS management

The RS232 interface on the MT along with the accompanying UPS management software allows for a whole range of communication options from shutdown to UPS diagnostics.

**PowershutPlus** runs as a client/server application for heterogeneous networks or local computers. It runs under Windows 95/98/2000/2003 Server/NT, Novell, Linux and all popular Unix derivatives. Furthermore it contains an SNMP agent under Windows NT and Novell.

All servers in the current network may shutdown (multiserver-shutdown) via optional RCCMD clients.

The software displays all important UPS information such as temperature, battery and power supply condition and more in clear graphical form. Any faults occurring can easily be relayed via e-mail, mobile or fax.





## Order information

Type	MH 700 RM	MH 1000 RM	MH 1500 RM	MH 2000 RM	MH 3000 RM
<b>Output</b>					
Power rating V/Watt	700/490	1000/700	1500/975	2000/1400	3000/2100
Current at 230 V	3,0 A	4,3 A	6 A	8,7 A	13 A
Connections	2x Earthed power socket	2x Earthed power socket	2x Earthed power socket	2x Earthed power socket	2x Earthed power socket
Output voltage	230 V $\pm$ 2 %				
Frequency	50/60 Hz $\pm$ 0,1 % autom.				
Voltage type	Sine				
<b>Input</b>					
Voltage	160-275 VA C (230 VAC)				
Frequency	45-65 Hz				
<b>Batteries</b>					
Autonomy time at nom. load	10 min	10 min	6 min	10 min	10 min
DC voltage	24 VDC	36 VDC	36 VDC	72 VDC	96 VDC
Assembly	7 A h-12V	7 Ah-12V	9,5 Ah-12 V	7 Ah-12 V	7 Ah-12 V
Type	sealed maintenance-free lead AGM batteries				
Loading time	8-10 hours at 90 %				
Test	automatic or manual via key				
PFC	Yes				
Avail. power efficiency AC-AC	>90 %				
Battery start	Yes				
Auto-restart	Yes				
Overload	110% for 10-25 seconds				
Noise level	< 40dA(A) at distance of 1m (load and temperature dependent)				
<b>Displays</b>					
LED (UPS status)	LINE; BYPASS; INV; FAULT; BAT-LEVEL; LOAD-LEVEL; BAT.(MH2000/3000)				
LED (load)	20%, 50%, 100%, OVERLOAD				
Acoustic alarm	Yes				
<b>Protection</b>					
Surge	Yes				
Lightning protection	ANSI/IEEE587 Cat A				
EMC/LVD	EN50091-2, EN50091-1				
Tests	TÜV, GS, CE				
Communication	RS232 /Optocoupler / SNMP via adapter				
<b>Area</b>					
Temperature	0-40°C (UPS without batteries)				
Air humidity	0-95 % (non-condensing)				
<b>Mechanical</b>					
Dimensions (U x D in mm)	2 U x 390	2 U x 390	2 U x 410	2 x 2 U x 480	2 x 2 U x 480
Weight	16,4 kg	19,3 kg	19,3 kg	15,4 + 25,4 kg	15,5 + 31 kg
Order number	23-5300-06	23-5300-07	23-5300-08	23-5300-09	23-5300-10